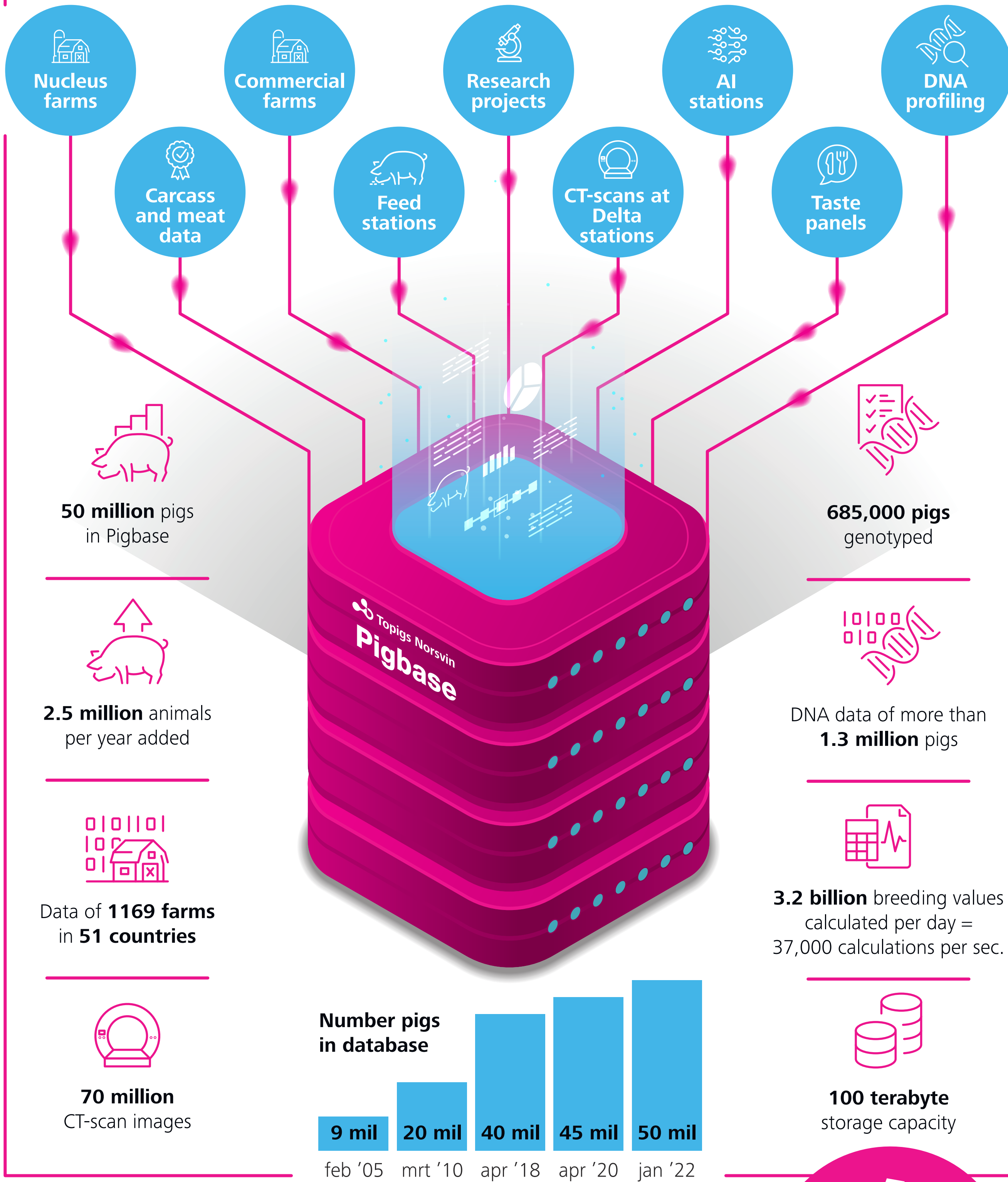


# DATA GATHERED



**50 million** pigs in Pigbase

**685,000 pigs** genotyped

**2.5 million** animals per year added

DNA data of more than **1.3 million** pigs

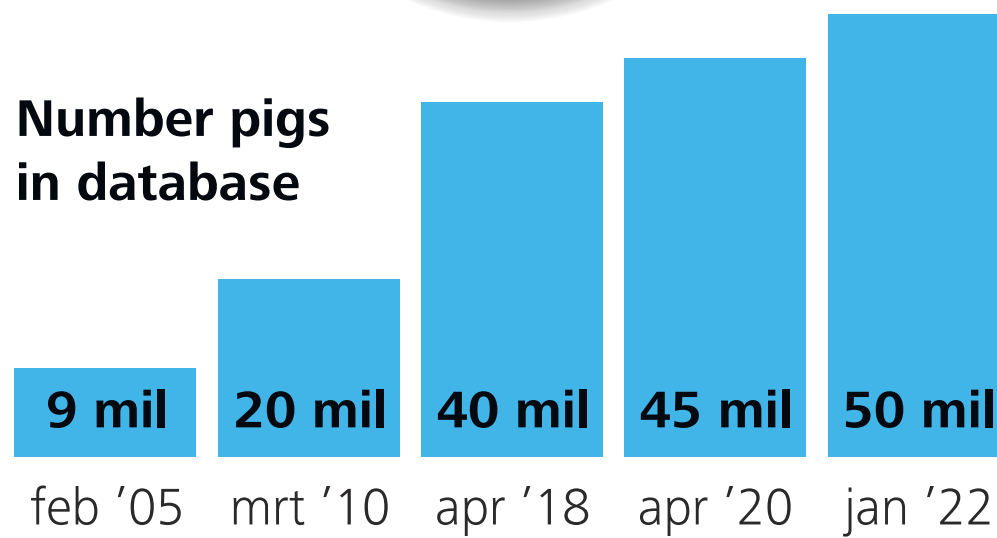
Data of **1169 farms** in **51 countries**

**3.2 billion** breeding values calculated per day = 37,000 calculations per sec.

**70 million** CT-scan images

**100 terabyte** storage capacity

**Number pigs in database**



# Pigbase

## breeding database

Pigbase contains data from breeding farms, commercial farms and processors creating a single large population of breeding pigs. This is the core of the Topigs Norsvin breeding program and makes it possible to achieve high genetic progress.

**50 MILLION ANIMALS IN PIGBASE. WORLD'S BIGGEST PIG DATABASE.**